



An Introduction to Safeguarding

Tim Marrion | DSL & Manager of Children, Young People and Families

Cara Bache-Jeffreys | Sport Welfare Officer

‘Safeguarding is everyone’s business but what are low level concerns and why should we take notice. This workshop will cover what low level concerns are, why they are important not to be ignored and how you can ensure the safety of all within your provision.’

What's on today...

- A bit about us and our role
 - How to connect
 - An introduction to safeguarding
 - What are low level concerns?
 - Definition
 - Examples
 - What happens if they're ignored?
- What to do with low level concerns
 - Culture
 - Reporting
 - Recording and Storing
 - Who to contact in Cornwall

Active Cornwall

Our Vision: Is for a Cornwall where inequalities are no longer a barrier to an active life. Underpinned by our core beliefs, our work across four strategic themes delivers long term systemic change and impact.



ADVOCATING FOR
CHANGE AND
WORKING TOGETHER
FOR MOVEMENT



LEARNING THROUGH
CHANGE AND
WORKING LOCALLY



BEING THE CHANGE AS
A STRONG, TRUSTED
ORGANISATION



BUILDING LASTING
CHANGE AND TACKLING
LONG TERM
INEQUALITIES

Active Cornwall

Our Vision: Is for a Cornwall where inequalities are no longer a barrier to an active life. Underpinned by our core beliefs, our work across four strategic themes delivers long term systemic change and impact.





The Sport Welfare Officer Network support and assist physical activity providers and club welfare officers to create safer and more inclusive environments, and improved experiences for children, young people and adults.

We add capacity and expertise to the existing safeguarding work of National Governing Bodies and Active Partnerships, promoting best practice and an effective welfare culture in clubs and physical activity providers.





CORE delivery approaches



Connect

- Forums for cross-sport learning and sharing of best practice
- Networks for Club Welfare Officers
- Collaboration with other organisations working locally to safeguard children, young people and adults

Offer Support

- Club visits with 1-2-1 bespoke support
- Help with developing safer and more inclusive club cultures
- Joint club visits with NGB staff / volunteers
- Local point of contact for NGBs, to support preventative work with clubs

Raise awareness

- Attendance at sporting events, to speak to parents/carers and participants about welfare
- Supporting clubs to promote local and national campaigns

Enable

- Training and development opportunities for Club Welfare Officers
- Signposting to the right advice and guidance

Cornwall Statutory Services



Local Authority Designated Officer (LADO)

- Co-ordinate cases where there is a concern about an adult working or volunteering with children/young people
- Regular meetings
- Training for clubs and physical activity providers
- Advise on sports or clubs that need support around safeguarding and welfare
- Support Active Cornwall with internal safeguarding procedures
- Available for advice!

Our Children's Safeguarding Partnership in Cornwall and Isles of Scilly (OSCP)

- Oversee arrangements of statutory safeguarding partners, to agree the ways that everyone is involved will work together to promote, safeguard and protect the welfare of children and young people.
- Run of the Partnership Forum
- Offer free resources and training (leaflet)

Multi-Agency Referral Unit (MARU)

- Provides multi-disciplinary response to concerns about the welfare or safety of a child/young person. In line with guidance from OSCP.
- Part of the Partnership Forum
- Available for advice and signposting
- Thresholds for child protection

Safeguarding Adults Board (SAB)

- Responsible for protecting adults from abuse, reducing risk of abuse and supporting people to stop abuse where it happens
- Part of the Partnership Forum
- Available for advice and signposting
- Thresholds for safeguarding adults

An Introduction to Safeguarding

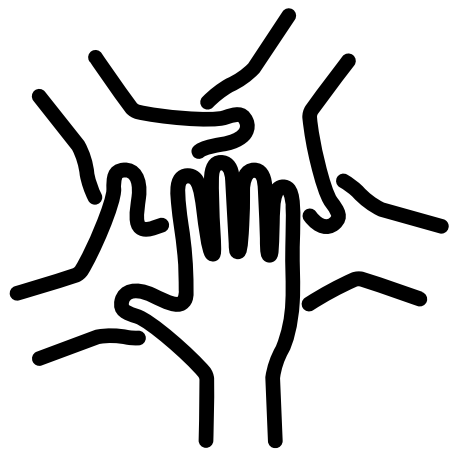
Activity:

Jigsaw Puzzle on your table, first team to complete their jigsaw wins!

‘Safeguarding is everybody's responsibility’

- Work Together
- Ask for advice
- Share appropriate information

Especially true for low level concerns



What are low level concerns?

Any concern - no matter how small, even if it only causes a sense of unease or doubt - that an adult has acted in a way that:

- is inconsistent with the organisations code of conduct, including inappropriate conduct outside of work
- doesn't meet the threshold of harm or is not considered serious enough to consider referral to LADO or statutory services.

Does not
mean it's
insignificant!

You aren't expected to decide
which concerns meet threshold -
you can always ask LADO and
services for advice

What are low level concerns?

Low level concerns are part of a spectrum of behaviour. This includes:

- inadvertent or thoughtless behaviour
- behaviour that might be considered inappropriate depending on the circumstances
- behaviour which is intended to enable abuse



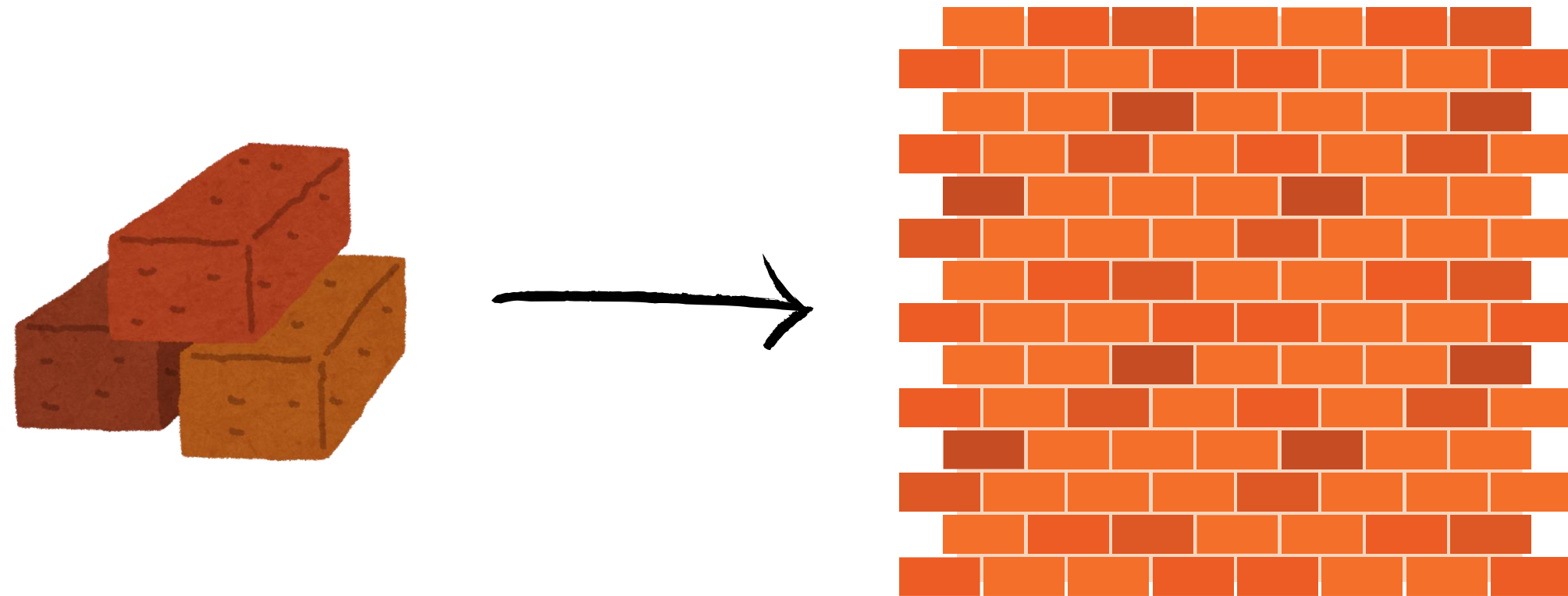
Examples include:

- being over friendly with children
- having favourites
- adults taking photographs of children on their mobile phones
- using inappropriate intimidating or offensive language

What are low level concerns?

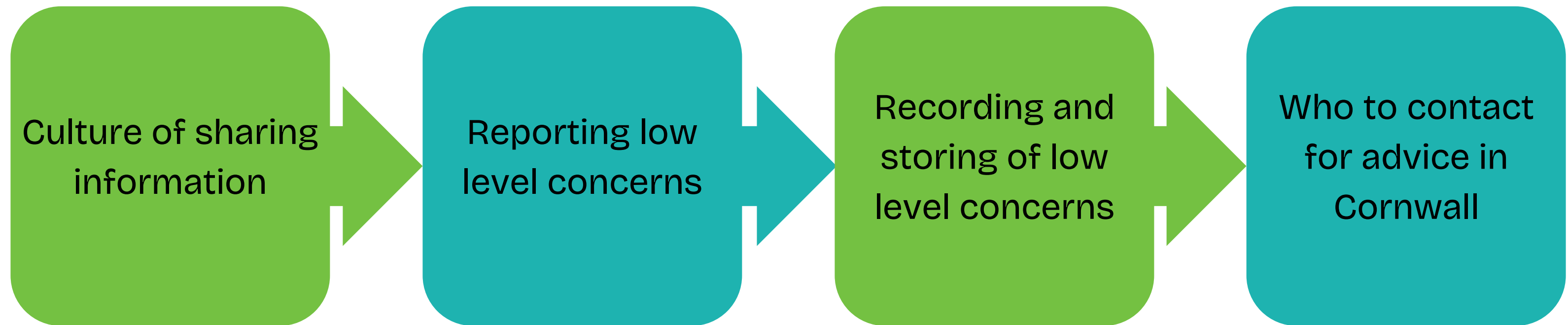
Low level concerns can be:

- indicators of a current, ongoing safeguarding concern
- add up to a safeguarding concern
- create a pathway to enable abuse



What to do with low level concerns

The following can be supported
in a low level concerns policy
or as part of an existing
safeguarding policy.



Activity: Using the flipchart paper on your tables

Discuss how you currently do (or would like to):

- Create a culture where low level concerns are reported
- Report low level concerns
- Record low level concerns
- Make decisions on who to contact in Cornwall

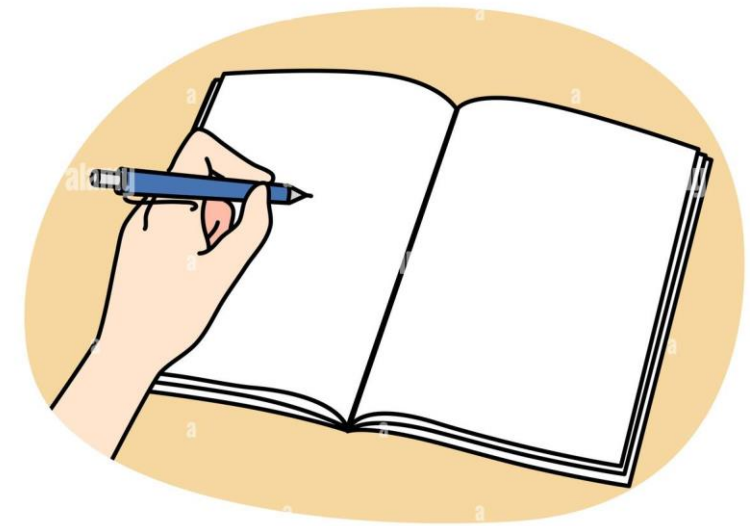


Sharing concerns: Promote a whole organisational approach to safeguarding, with openness and transparency, so all concerns are dealt with promptly.

How?

- ensure everyone is clear about what appropriate behaviour is and are confident in distinguishing expected and appropriate behaviour from concerning, problematic or inappropriate behaviour both in themselves and others
- empower staff/volunteers/members to share any low-level concerns
- addressing inappropriate behaviour and supporting the individual to correct it at an early stage
- providing a responsive, sensitive and proportionate handling of concerns
- reviewing and adapting the organisations safeguarding system (policies, procedures, training etc.)

Reporting low level concerns



Establish a clear process and identify a named lead low level concerns can be reported to.
Identify a named deputy, so if the lead is unavailable or the concern is about the named lead, the deputy is there.

How?

- Standard reporting form
- Identify named people (lead and deputy)
- Advertise on social media, in policies and procedures, on newsletters, websites, noticeboards etc.

Recording and storing low level concerns



Record all concerns in writing, include the context in which the concern arose, any action taken and the rationale for decisions or action taken (using standard reporting form)

Keep records:

- confidential, secure and compliant with [UK GDPR](#) and the [Data Protecting Agency](#)
- reviewed so any patterns can be identified and acted upon appropriately (e.g., disciplinary procedures/consult with LADO etc.)

REPORT A CONCERN IN CORNWALL



USE THE DETAILS BELOW TO REPORT YOUR CONCERNS.

If you are not sure who to contact, the **Multi Agency Referral Unit** should be your first point of call for anyone under the age of 18 and the **adults help desk** for anyone over 18 years old. If your concerns are around school, please contact the school's designated safeguarding lead or their deputy.

The Multi Agency Referral Unit (MARU), Cornwall

Open from 9am to 5pm, Monday - Friday
Telephone: 0300 123 1116
[Online Referral Form](#)
Outside of office hours, contact the Out of Hours Social Work Service on 01208 251 300.



Their procedures can be found here

If you have concerns about the immediate safety of a child or you believe a serious criminal offence has been committed please contact the **Police** at any time on **999**.

Safeguarding Adults in Cornwall

For adults at risk, call the Adults Help Desk on 0300 1234 131, 9am-5pm Monday - Friday.
Out of hours: 01208 251 300.



Cornwall and Isles of Scilly Safeguarding Partnerships

This is a good space to find an overview of different services for children and adults



ChildLine

Alternatively, you can call ChildLine for advice on 0800 1111 or e-mail them by using the QR code.



Allegations against people who work with adults with care and support needs

A Person in Position of Trust (PiPoT) allegation relates to a person who works with adults with care and support needs who has behaved in a way that harms/potentially harms an adult at risk.



CORWALL LOCAL AUTHORITY DESIGNATED OFFICERS (LADO)

What is a LADO?

The LADO's primary function is to manage and have oversight of any investigation into an incident where an allegation of abuse or harm has been made against a professional or volunteer who has contact with children as part of their work or activities.



When do I contact the LADO?

It is your responsibility to contact the LADO within 1 working day of an incident arising and prior to any further investigation taking place.

When it appears that an allegation or concern about a person who works with children has:

- Behaved in a way that has harmed a child or may have harmed a child
- Possibly committed a criminal offence against or related to a child
- Behaved towards a child/children in a way that indicates he/she may pose a risk to children.

How to contact the LADO's



LADO@cornwall.gov.uk



01872 326 536

Online referral form



How to connect

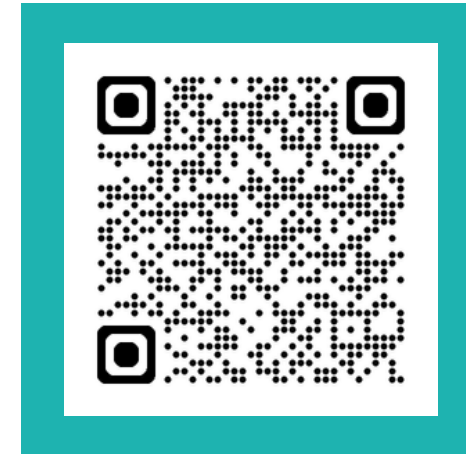


Cornwall Sport Club Welfare/Safeguarding Officer Network

- Closed group for Welfare/Safeguarding Officers
 - Network with other providers and sports
 - Training and resources

[You can find the group here](#)

[You can find me on FB here](#)



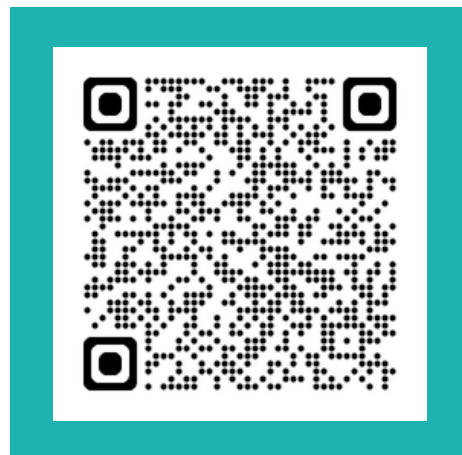
[Training/resources visit our website!](#)



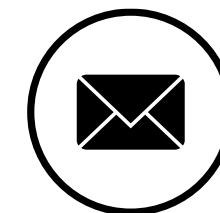
Welfare and Safeguarding Newsletter

- Disseminate national information
- Local Updates
- National campaigns (help raise awareness of your club)
- Training opportunities

[You can subscribe here](#)



I would love to hear from you.



Cara.Bache-Jeffreys@cornwall.gov.uk



07736 625 689



Thank you

Any questions?