



The Rule of Six

The Government is changing the rules about meeting other people.

They are calling the new rules 'The Rule of Six'.



What does the Rule of Six mean?

The Rule of Six means we can only meet in groups of up to six people.

This can be inside,

Or outside.

The six people do not have to live in the same house.



Why have they changed the rules?

They have changed the rules for two reasons:

1. One reason is because **people were getting confused** by all the different rules about when they can meet up.

2. The other reason is because **the number of people getting Coronavirus is going up** so we need to be more careful.



 	<p>When do the new rules start?</p> <p>The new rules start on Monday 14th September 2020.</p>
 	<p>What about if I want to meet more than six people?</p> <p>From 14th September it is illegal for more than six people to meet in a group.</p> <p>This means it is against the law. If you break the new law you can be fined. The fines start at £100.</p>
    	<p>Are there any places where it is OK to be in a group of more than six people?</p> <p>Yes. The Government has said there are some times and places when that is ok.</p> <p>You can be in a group of more than six at:</p> <ul style="list-style-type: none"> - A wedding - A funeral - Work - School or college - Or playing a team sport
 	<p>There are more than six people living in my house. What about that?</p> <p>The Rule of Six does not apply to the people you live with. If you live with more than six people it is ok to be in a group with them.</p>

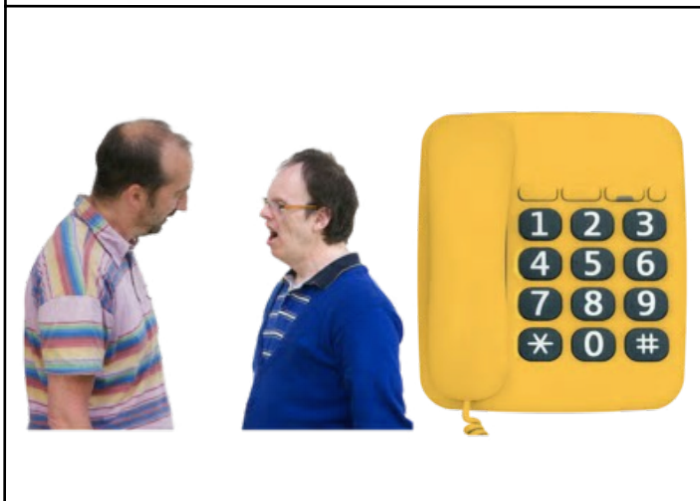


**cornwall
people first**



I live on my own, and I am in a support bubble that is more than six people. Can I still meet them?

Yes. The Government has said that if you live on your own and you are in a support bubble you can still meet the people in your bubble, even if there are more than six of them.

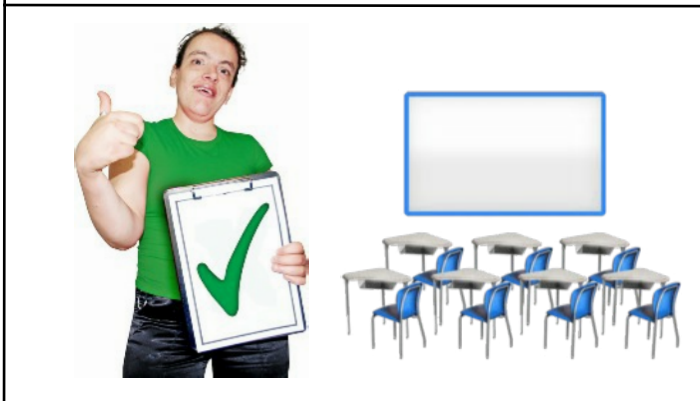


If you are not sure if you are in a support bubble you could ask someone to check for you.

You could ask:

- Someone in your family
- Your support worker
- A friend or neighbour

Who could *you* ask?



I am going back to college. There are more than six people in my class. Is that OK?

Yes. The Government has said that you can be in a group of more than six people if it is for educational reasons. This includes college.



I go to work. What about that?

Yes, you can still go to work even if more than six people work with you.

If you are worried about keeping safe at work talk to your manager.



What about my Day Service? I am supposed to be going back soon.

Lots of day services have been working hard to make sure people who use the service will be kept safe when they go back

If you are not sure about going back to your day service talk to someone about it.



If you need help to contact your day service you could ask:

- A member of your family
- Your support worker
- A friend or neighbour.

Who could *you* ask?



What about pubs and places like that? There are more than six people in my local pub!

You can still go to places like pubs, and cafes, but you must stay in your group.

You must not join up with another group of people who are also there -even if you know them!



Can we go through the new rule again?

Yes. The Rule of Six means you can only meet in a group of up to six people, either inside or outside.



cornwall
people first



The new rule starts on 14th September.

After that it will be illegal to meet in a group of more than six.



The Rule of Six does not apply to:

- Support bubbles
- Work
- School or college
- Weddings
- Funerals
- Playing a team sport.

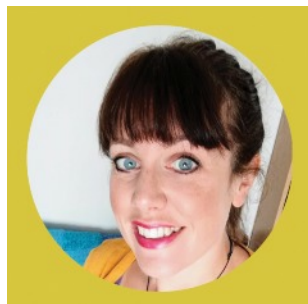
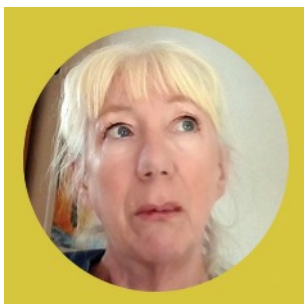


You can still go to places where there are lots of other people, but **you must stick to your own group.**



Remember to keep safe when you're out and about:

- Wash your hands regularly
- Wear your face covering
- Keep your distance



From all of us at CPF!